

Vermont's
Health Information Technology
Landscape: A Field Guide

Mark Larson, Commissioner
Department of
Vermont Health Access

“HIT” Covers Multiple Programs, Initiatives, Departments & Divisions



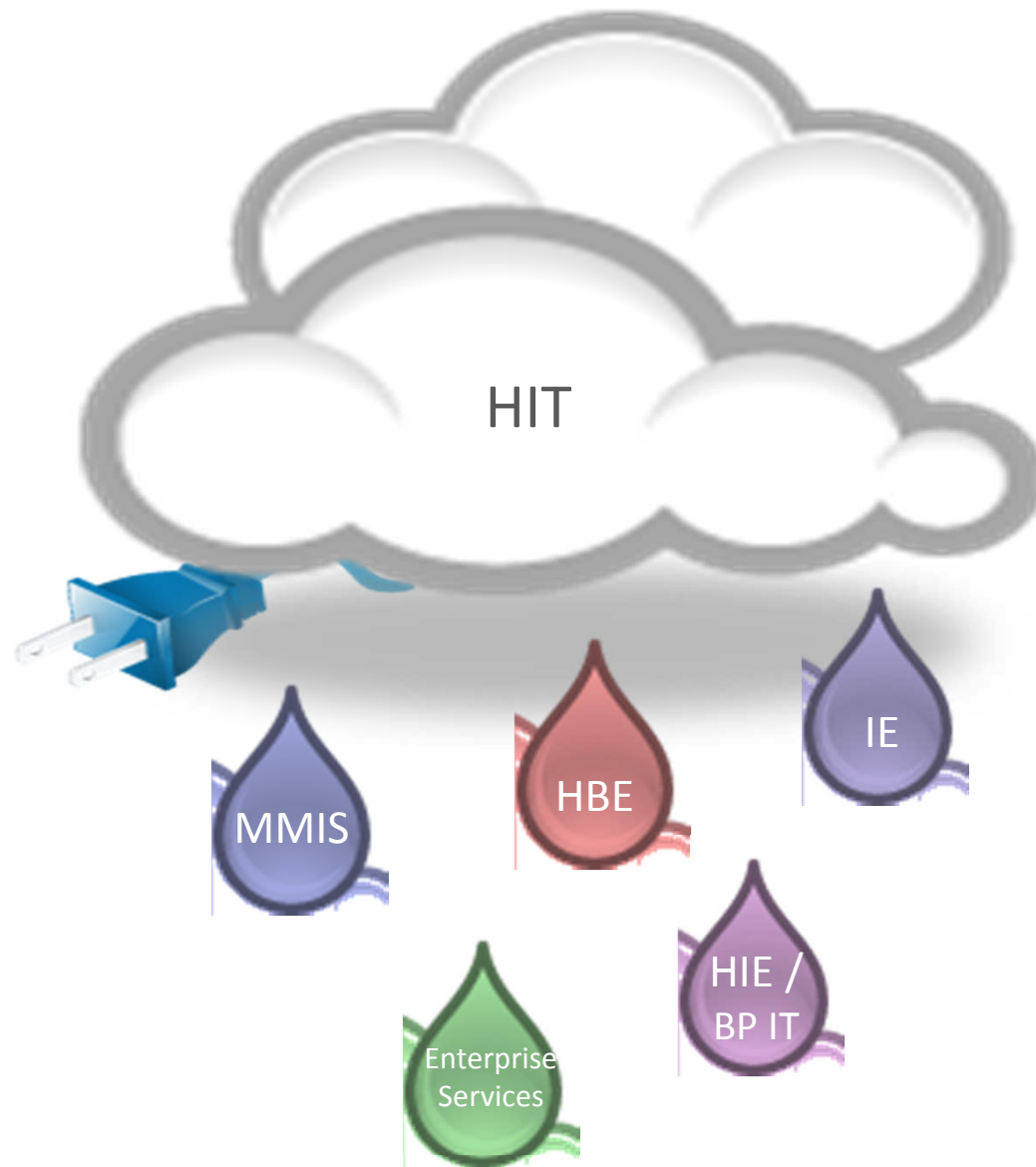
**Medicaid
Management
Information
Systems
(MMIS)**

**Health
Benefits
Exchange
(HBE)**

**Integrated
Eligibility
(IE)**

**Health
Services
Enterprise
Platform
(HSE)**

**Health
Information
Exchange /
Blueprint IT
(HIE/BP IT)**



HIT projects
come together
to achieve data
liquidity.

Data liquidity:

- Data up to date and accurate
- Data shared among providers and patients
- Data available for measurement & improvement
- Data available for enrollment in coverage & claims payment

Data Liquidity

Organizational and Responsibility Structure

Health Services Enterprise Executive Committee

Enterprise Operations Steering Committee

MMIS

Health
Benefits
Exchange
(HBE)

Integrated
Eligibility

Health
Services
Enterprise
Platform

Health
Information
Exchange
&
Blueprint IT

Organizational and Responsibility Structure

Health Services Enterprise Executive Committee

Robin Lunge
Director of Health
Reform

Doug Racine
Secretary,
AHS

Mark Larson
Commissioner,
DVHA

David Yacovone
Commissioner, DCF

Jim Reardon
Commissioner,
Finance & Mgmt

Richard Boes
Commissioner, DII

Enterprise Operations Committee

Tom
Jenny
Interim
Prog Dir

Lindsey
Tucker
DVHA

Lori
Collins
DVHA

Steve
Maier
DVHA

Joe
Liscinsky
DVHA

Beth
Rowley
DCF

Darin
Prail
AHS CO

Jill Gould
DVHA

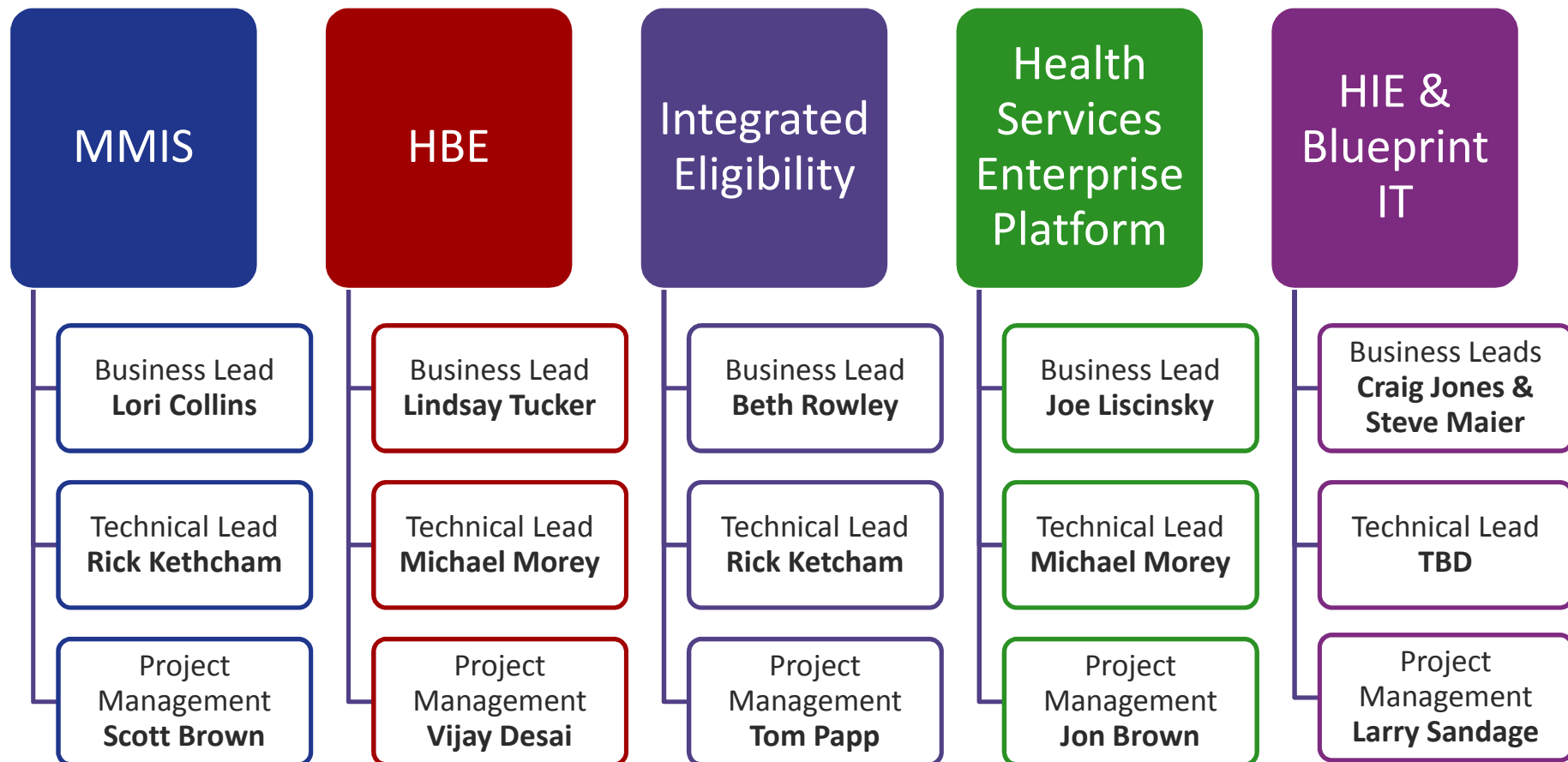
Jim Giffin
AHS CO

Mike
Morey
DII

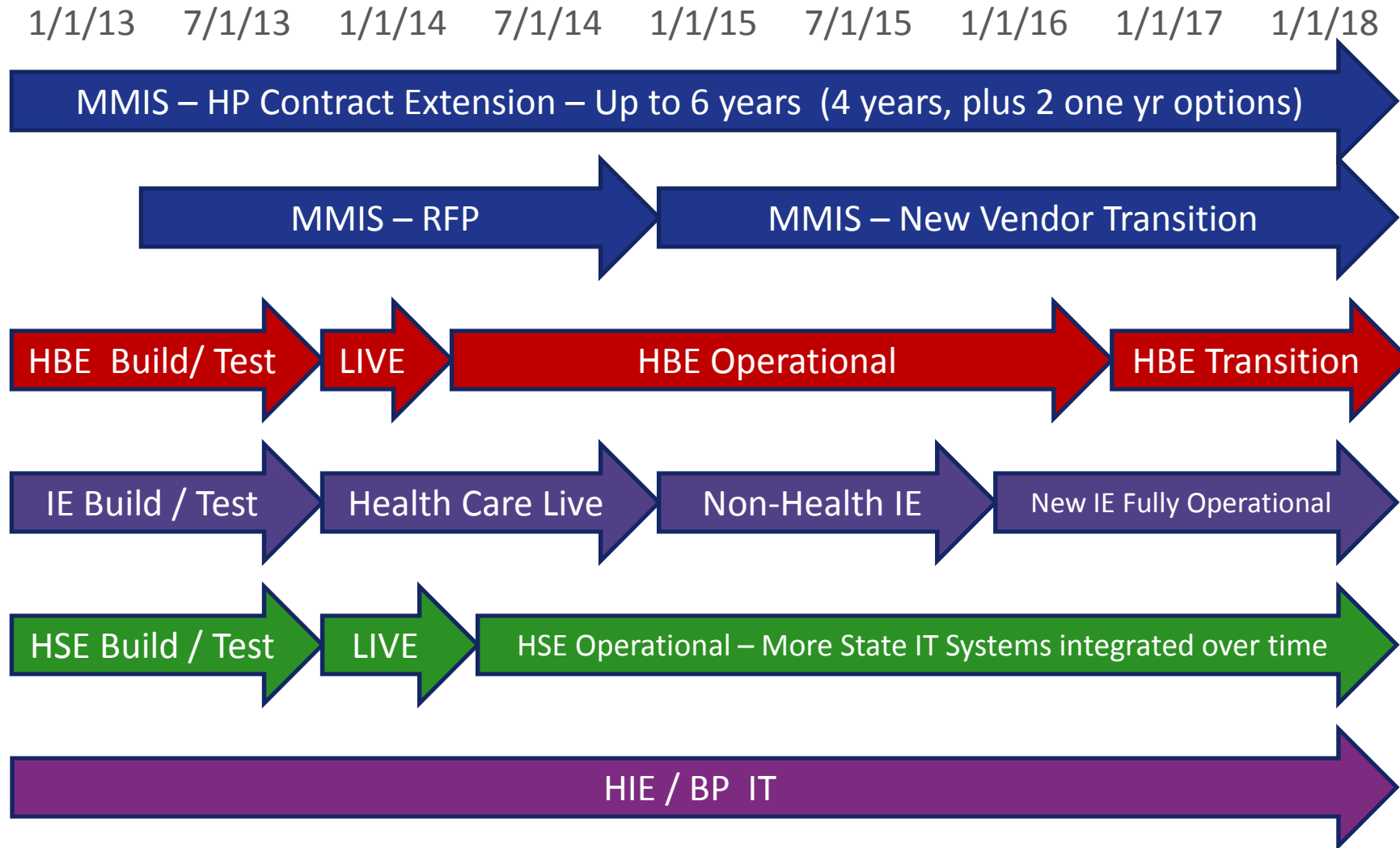
Michelle
Lavallee
DVHA

Team Roles and Responsibilities

Program Director (Interim): Tom Jenny



HIT Project Timelines



State & Federal Resources

Funding Allocations as approved by CMS in “jumbo IAPD”

<p>Health Benefits Exchange</p> <ul style="list-style-type: none"> • TOTAL: \$113M • 100% federal funds 	<p>Medicaid Management Information Systems</p> <ul style="list-style-type: none"> • TOTAL: \$125M • State Investment: \$12.5M • Leveraged portion: \$112.5 	<p>Integrated Eligibility</p> <ul style="list-style-type: none"> • TOTAL: \$21.5M • State Investment: \$2.15M • Leveraged portion: \$19.35M 	<p>Health Services Enterprise Platform</p> <ul style="list-style-type: none"> • The SOA platform shared services are included in HIX, MMIS, E&E, and HIE totals. 	<p>HIE & Blueprint IT</p> <ul style="list-style-type: none"> • IAPD Funding Only: \$18.5M • State Investment: \$6.2M HIT Fund • Leveraged portion: \$12.3M
---	---	--	---	---

All dollars shown above are estimates approved by CMS 5/4/12 and are subject to change based on updated information, negotiated prices, and CMS approval.